

Module FA_Bonding: Revision 3.2.169

As of update >3.2.157, module [FA_Bonding](#) is delivered in a revised version. This affects the following features, among others:

1. Navigators adjusted
2. Point list visually revised
3. New menu entries and shortcuts
4. Line_Up adjusted

User Interface

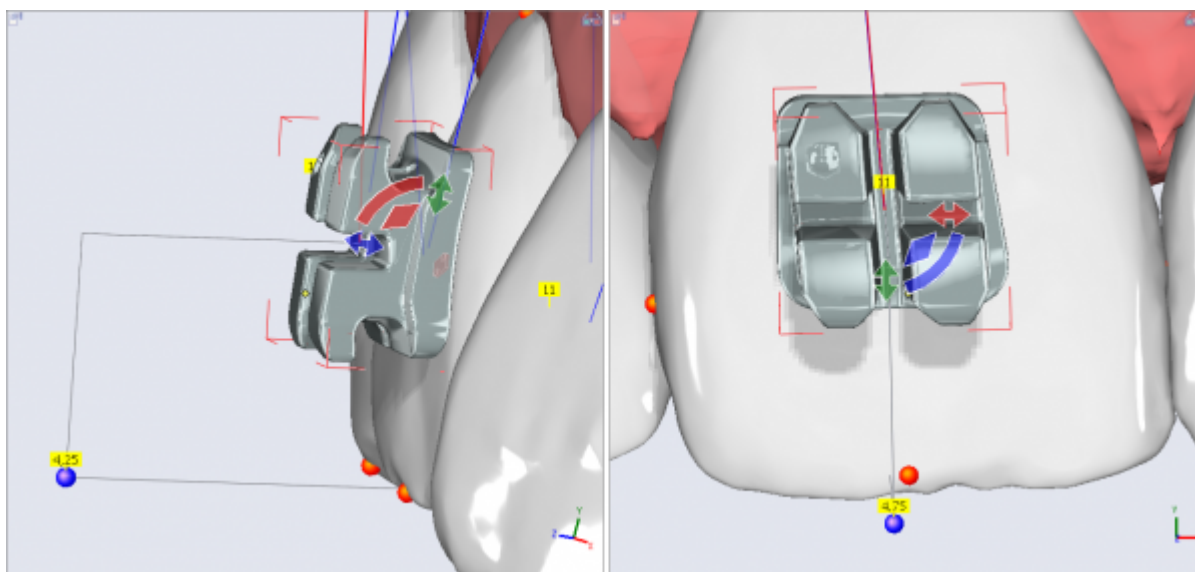
The revision of the functionality is accompanied by a minor adjustment of the user interface:

[fa_mod157p.png](#)

1. Navigators

In order to best adapt the function of the navigators to the way of working during the physical correction of bracket placement (e.g. with the help of a setting tool; Bantleon ruler), the directions of movement and center of rotation were modified:

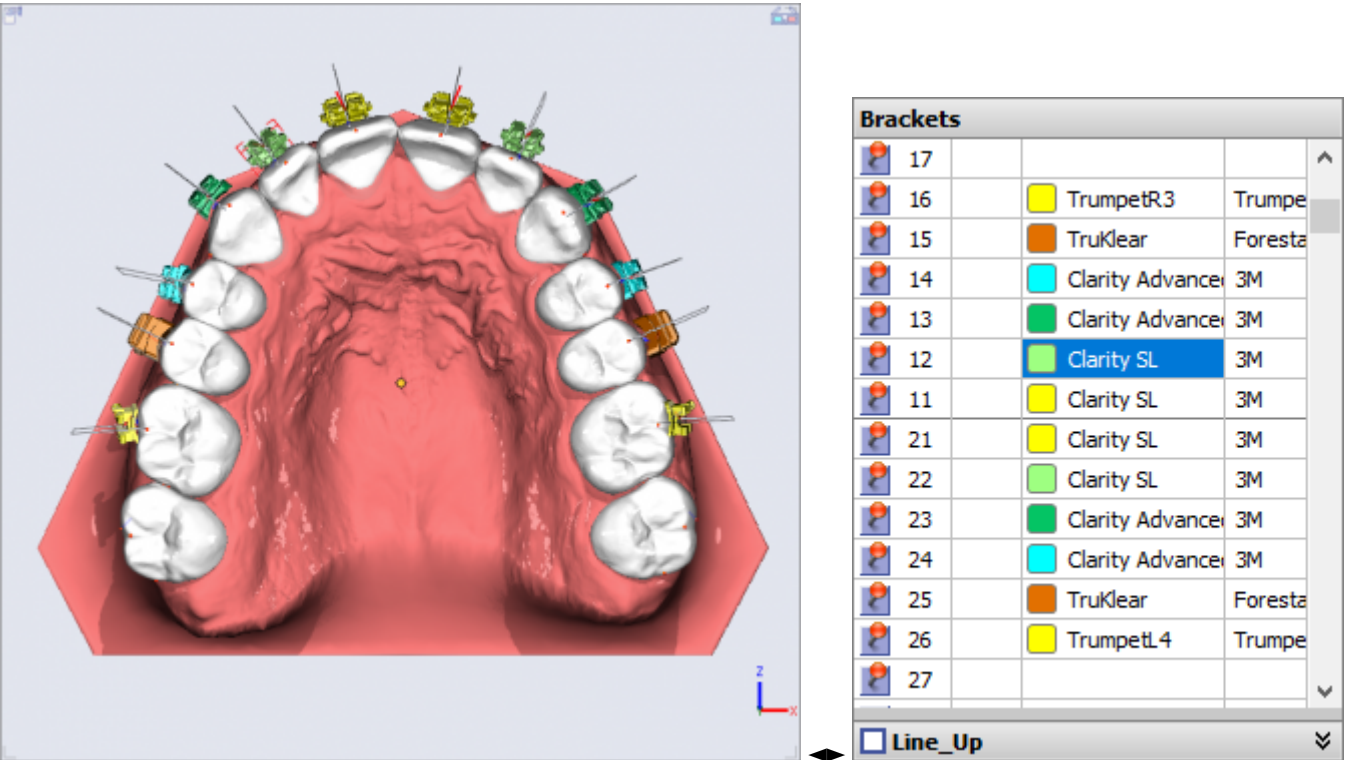
- In the direction of the crown along base normal
- Mesial-distal along slot
- Placement guide "Bantleon Ruler" added
- Multiple movements are also supported in 2D Navigator



In addition, the previously different behavior of the navigators in the 3D view and in the 2D navigator panel has been harmonized.

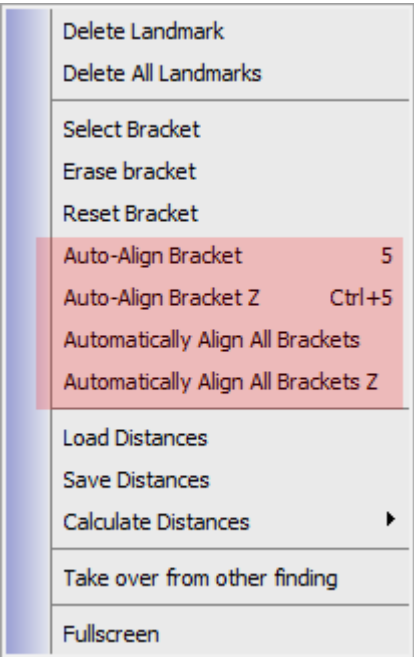
2. Pointlist revised

The list entries now have a color marker corresponding to the bracket coloring in addition to the name and manufacturer, which should make it easier to navigate the bracket list.



3. New menu items and shortcuts

Some entries and ShortCuts have been added to the context menu. For example, aligning a single bracket or all brackets on the tooth crown can now additionally be done in the direction of three base normals without causing simultaneous tilting.



4. Line_Up extended

The Line_Up function is now also supported for mixed dentition, using placeholders corresponding to the opposite crown for teeth missing on one side.

From:

<https://onyxwiki.net/> - [OnyxCeph³™ Wiki]

Permanent link:

https://onyxwiki.net/doku.php?id=en:fcift_fab

Last update: **2021/11/30 08:59**

