

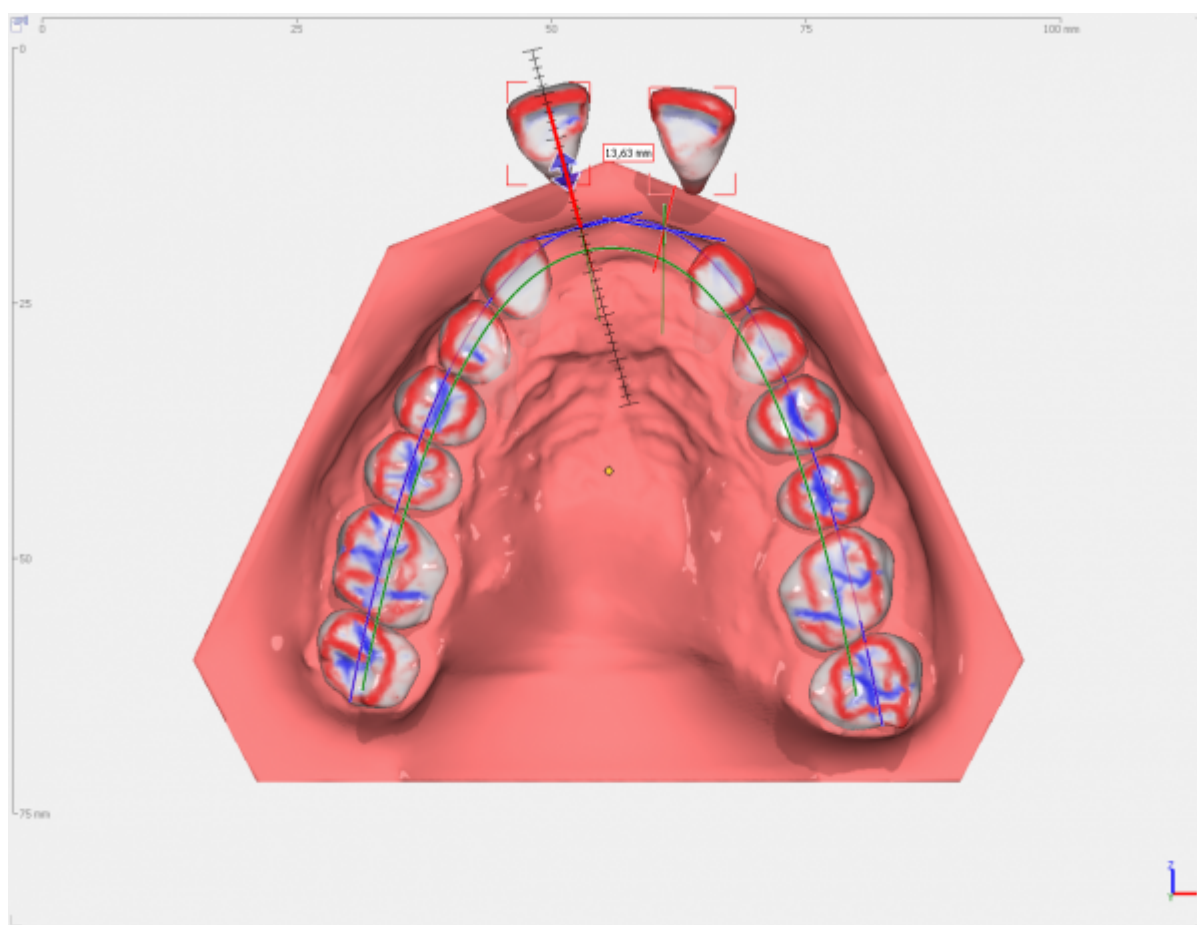
## Combined Crown Movement

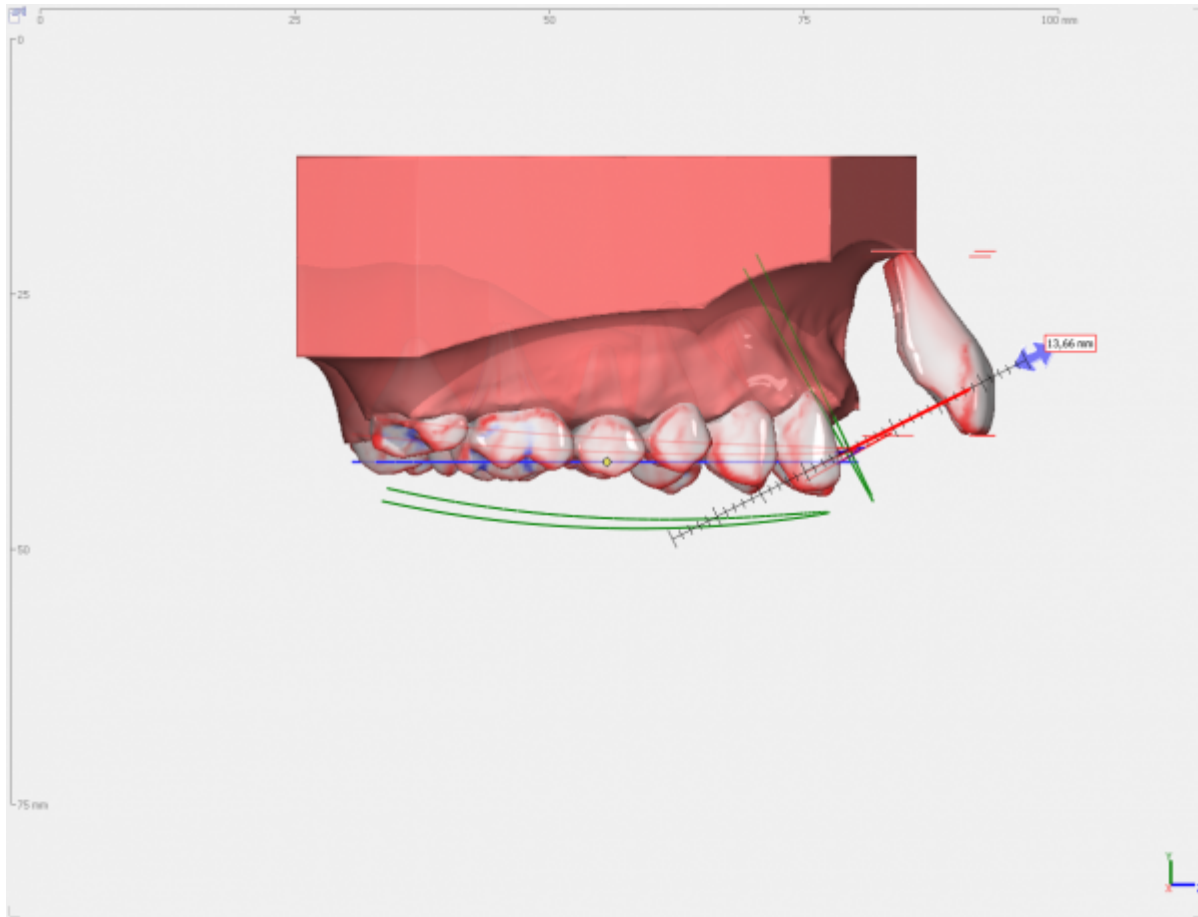
In OnyxCeph<sup>3</sup>™, virtual movements of single or multiselectd crowns are controlled parallel resp. around the **crown coordinate system** axes assigned during segmentation.

Real tooth movements instead are always representing a combination of multiple of these components/degrees of freedom. This combination depends on several parameters which are not reproducibly known or relatable - e.g., the crown individual position of the rotation center for protrusion. Such combined movement has to be simulated by the user by separate control of each component.

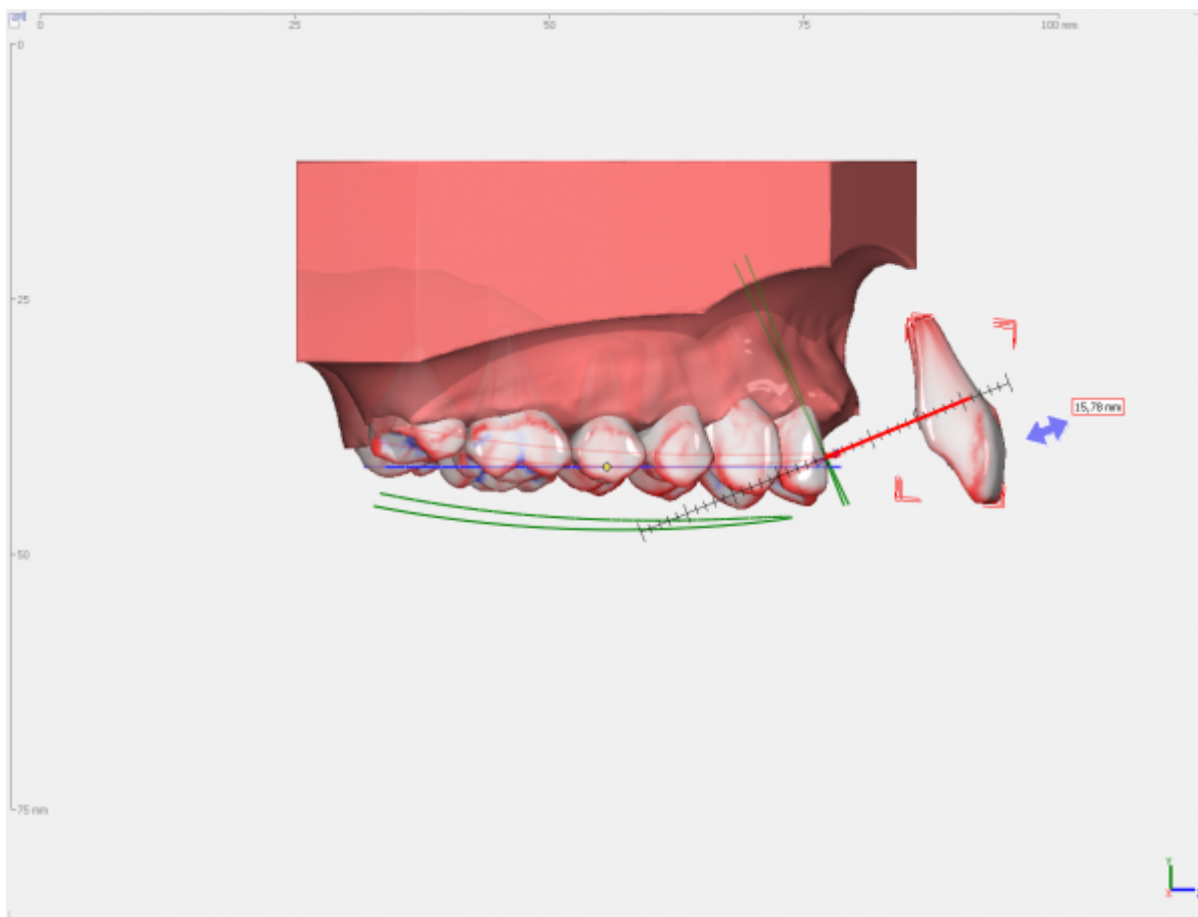
Deviating from this, in certain cases, individual and group movements can be summarized and/or applied in view coordinates.

In case of multi selection, the control will affect all teeth in the group.

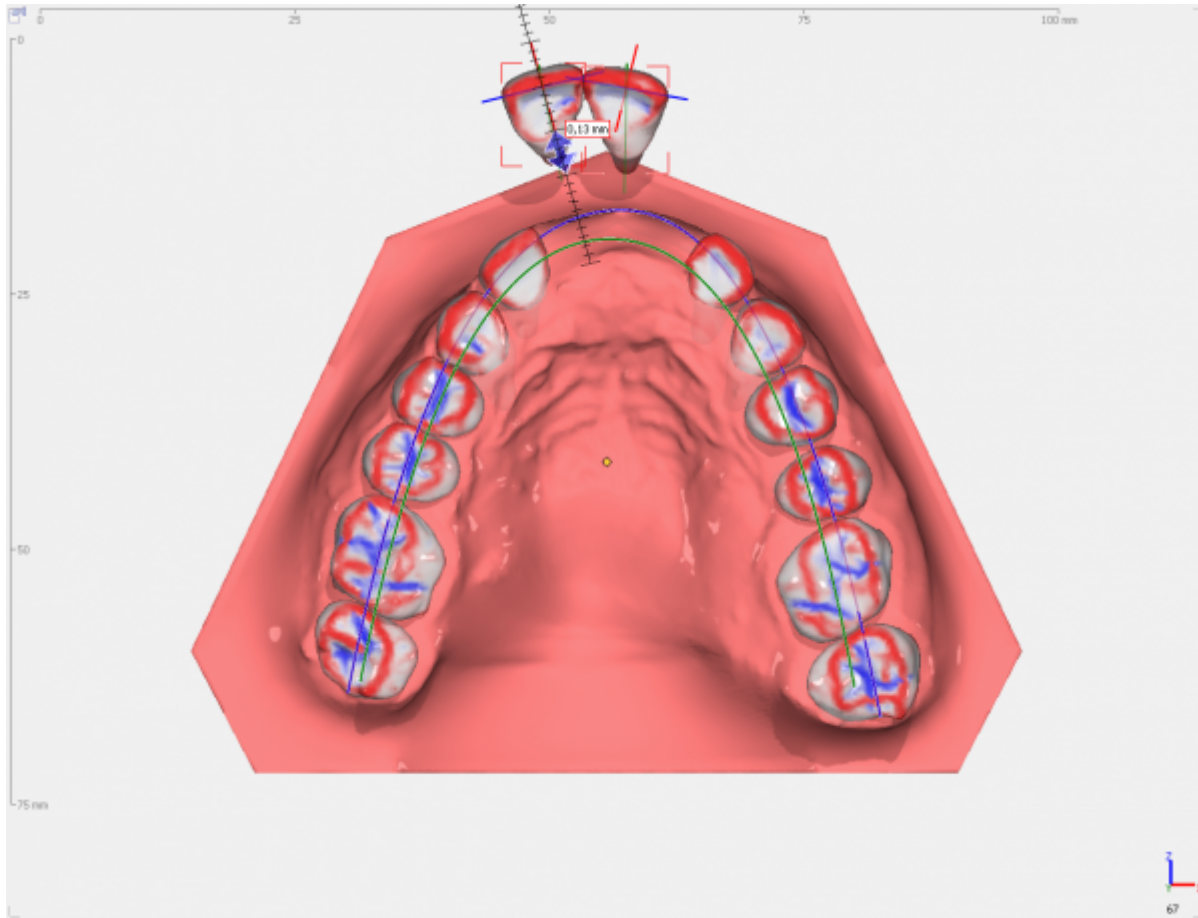




If CTRL is hold down in addition to the mouse movement, the occlusal components (movements alongside tooth axes) are ignored.



When pressing the SHIFT button during the movement of multi selected crowns, the movement is applied to the entire group using the coordinate system of the first crown acc. to the tooth number sequece.



From:  
<https://onyxwiki.net/> - [OnyxCeph<sup>3</sup>™ Wiki]

Permanent link:  
<https://onyxwiki.net/doku.php?id=en:20180406012>

Last update: **2018/04/06 19:45**

