

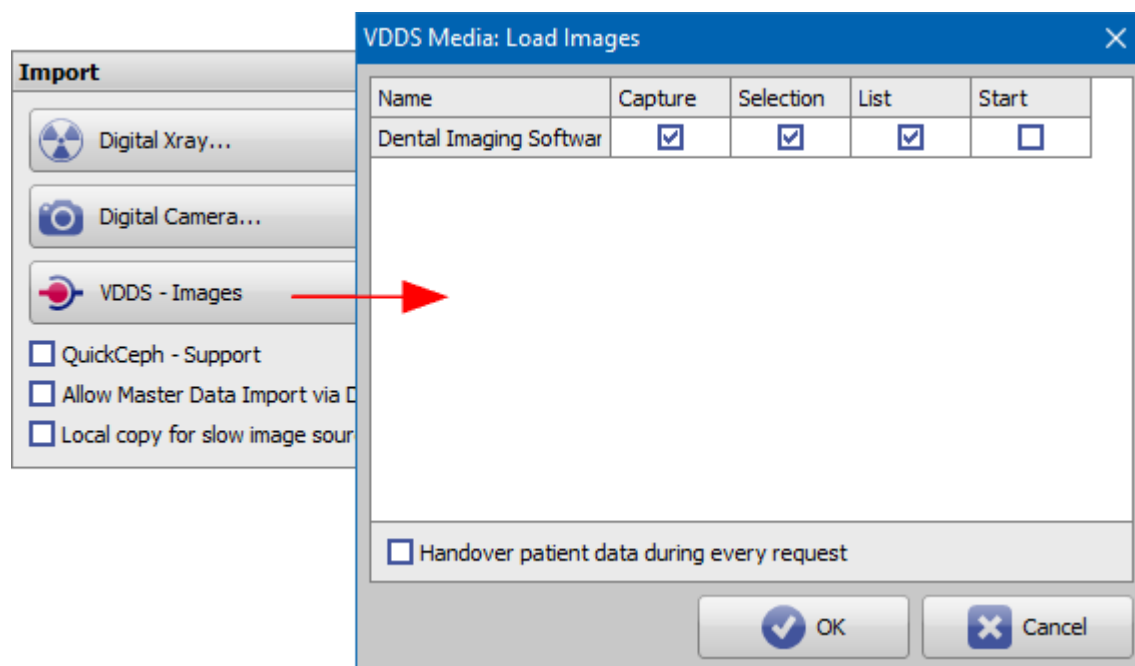
System Options - Interfaces - VDDS-Images

All VDDS image management systems (IMS) entered in the local communication file VDDS:_MMI under C:\Windows can provide the following options:

Option	Description
Capture	launching IMS in image acquisition mode
Selection	Thumbnail view for image selection in source panel
List	List view for image selection in source panel
Start	Creates IMS entry in OnyxCeph ³ ™ main menu [Go To]

Which of these options should be offered or used at the workstation in OnyxCeph³™ can be preset separately for each partner via the checkboxes.

Depending on the use of the "PMS_Limit" parameter, communication from the IMS may have been restricted to a selected practice management system (PMS). In order to be able to access patients or their images from OnyxCeph³™ that have been created in the IMS exclusively by another PMS, the [Handover patient data during every request] checkbox must be activated. This applies, for example, when configuring IMS byzz.\



From:

<https://onyxwiki.net/> - [OnyxCeph³™ Wiki]

Permanent link:

https://onyxwiki.net/doku.php?id=en:settings_vdds_ims

Last update: 2022/05/13 11:15

